



SHOWBALL

PLAYER PROFILE POWERED BY: VIRTUAL COMBINE

ALL IN ONE PLAYER DEVELOPMENT, DATA TRACKING, AND SHOWCASING PLATFORM

OWN YOUR DATA

SHOW YOUR VERIFIED PERFORMANCE AND STRENGTH METRICS AND SET YOURSELF ABOVE THE REST.

CUSTOMIZABLE PLAYER PROFILE

ALL YOUR VERIFIED ATHLETIC, ACADEMIC, AND CONTACT INFORMATION IN ONE PLACE. SELF PROMOTE THROUGH SOCIAL MEDIA AND #BUILDYOURBRAND.

UNLIMITED VIDEO UPLOADS

UPLOAD IN-GAME HIGHLIGHTS, INTERVIEWS, SHOWCASE WORKOUTS, OFF-SEASON TRAINING, SENSOR TECHNOLOGIES W/DATA OVERLAY, AND MORE.

LINK TREE

NO MORE GOOGLE SEARCHING FOR YOUR PG, PBR, GAME CHANGER, NCSA, MAX PREPS, ETC. HAVE ALL OF YOUR INFORMATION FROM ANY PAST PROFILE ALL IN ONE PLACE!

SEARCHABLE PROFILES

GET FOUND IN OPEN SEARCH, ROSTERS, EVENT & NATIONAL LEADERBOARDS, OR SEND YOUR DATA, WHERE AND WHEN YOU WANT.

SCHOOL SEARCH

COMPLETE ACCESS TO A COLLEGE STAFF & ADMISSIONS DATABASE WITH THE CONTACT INFO, SOCIAL MEDIA ACCOUNTS AND ACADEMIC REQUIREMENTS FOR EVERY SCHOOL IN THE US.

WHAT INFO DOES A COLLEGE COACH NEED IN THE RECRUITING PROCESS?

ACADEMIC INFORMATION

- GPA
- ACT
- SAT
- CLASS RANK

SPEED/STRENGTH/ATHLETICISM

- COMBINE TESTING RESULTS (60, 5-10-5, BROAD, HEIGHT, WEIGHT, ETC.)
- RAPSODO, BLAST MOTION, TRACKMAN, THROWING VELOS, BASE RUNNING TIMES, ETC.
- WEIGHT ROOM MAXES (BENCH, SQUAT, POWER CLEAN, ETC.)

MEDIA

- PG/PBR SCOUTING REPORTS
- INTERVIEWS
- NEWSPAPER ARTICLES
- SOCIAL MEDIA POSTS

CONTACT INFO

- SOCIAL MEDIA ACCOUNTS (TWITTER, INSTAGRAM, ETC.)
- PHONE NUMBER, EMAIL, COACH INFO, ETC.

AWARDS AND ACCOLADES

- ALL DISTRICT, AREA, REGION, STATE
- ACADEMIC ACCOMPLISHMENTS
- LEADERSHIP
- COMMUNITY SERVICE

ON FIELD PRODUCTION/VIDEO

- GAME FILM
- HUDL HIGHLIGHTS
- YOUTUBE VIDEOS
- GAME STATS (GAMECHANGER/MAX PREPS)
- OTHER SPORTS HIGHLIGHTS

IN PERSON EVALUATION

- COLLEGE CAMP EVALUATIONS
- POSITION SPECIFIC DRILLS
- BATTING PRACTICE
- GAME /PRACTICE COMPARISONS
- IN GAME EVALUATION

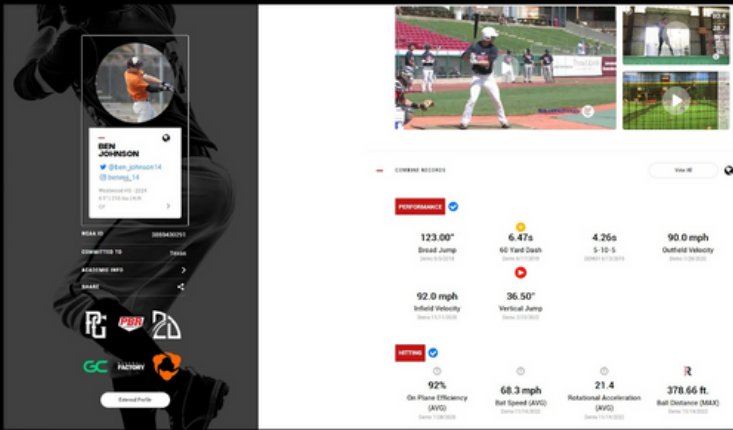
CHARACTER

- DO YOU FIT INTO THE CULTURE OF OUR PROGRAM?
- WHAT TYPE OF TEAMMATE ARE YOU?

YOUR SHOWBALL PROFILE ALLOWS YOU TO PROVIDE ALL THIS INFO AND MORE, ALL IN ONE PLACE!

MANAGE YOUR PLAYER PROFILE TO STAND OUT

SHOWBALL MAKES IT EASY TO SEND YOUR PLAYER PROFILE TO COLLEGE COACHES AND SELF-PROMOTE THROUGH SOCIAL MEDIA BETTER THAN ANY TECHNOLOGY IN THE MARKET. GET FOUND IN OPEN SEARCH, EVENT/NATIONAL LEADERBOARDS, OR SEND YOUR DATA, WHERE AND WHEN YOU WANT. OWN THE PROCESS AND PUT US TO WORK FOR YOU!

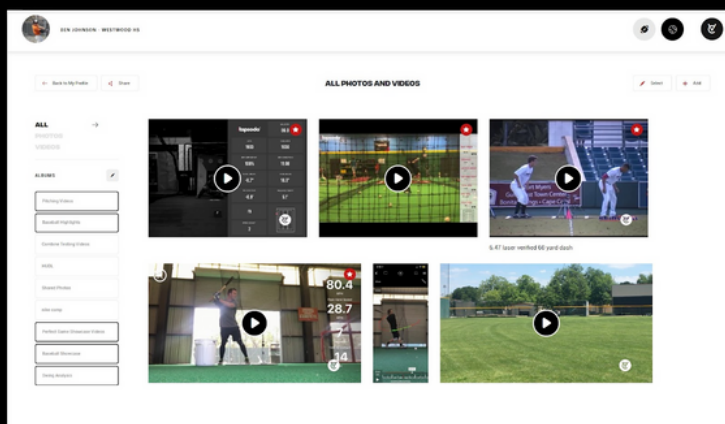
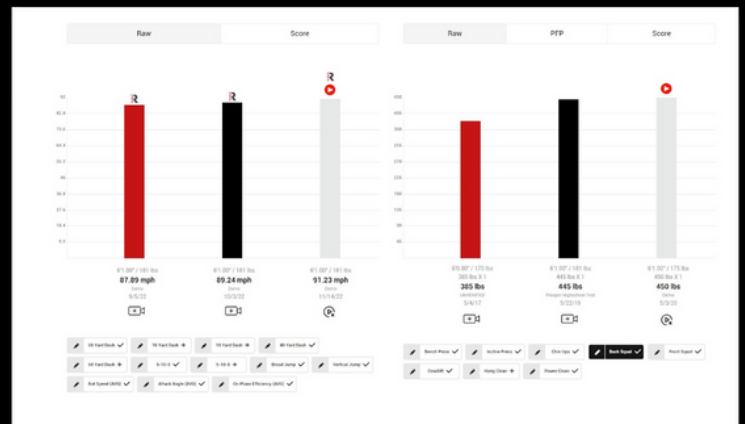


PLAYER PROFILE

- ACADEMIC INFO
- SOCIAL HANDLES
- NCAA ID#
- VERIFIED DATA
- VIDEO HIGHLIGHTS
- AWARDS & ACCOLADES
- LINK TREE (PG, PBR, GAME CHANGER, ETC)
- INSTRUCTION VIDEOS
- SHAREABLE VIA SOCIAL MEDIA, EMAIL/TEXT

PLAYER DATA PAGE

- OWN YOUR DATA
- TRACK YOUR DATA HISTORY AND PERSONAL RECORDS TO IMPROVE YOUR ON FIELD PERFORMANCE.
- UPLOAD DATA FROM ANY COMBINE, SHOWCASE, OR PROSPECT CAMP THAT YOU ATTEND.
- VALIDATE ALL OF YOUR DATA WITH VIDEO VERIFICATION.



VIDEO LIBRARY

- UNLIMITED STORAGE
- ORGANIZE YOUR CONTENT WITH ALBUMS AND DIGITAL FOLDERS.
- DISTRIBUTE YOUR VIDEO HIGHLIGHTS THROUGH SOCIAL MEDIA, EMAIL/TEXT WITH ONE CLICK OF THE BUTTON.

BUILD YOUR BRAND AND CREATE MORE OPPORTUNITIES!

LEADERBOARDS

- SEE HOW YOU STACK UP AGAINST YOUR COMPETITION ON THE EVENT, AND SHOWBALL NATIONAL LEADERBOARDS

SHOWBALL LEADERBOARD

RANK	ATHLETE	40 YARD DASH	OUTFIELD VELOCITY	INFIELD VELOCITY	CATCHER VELOCITY	CATCHER POP TIME (S)
1	Bill Smith OF 2022 185 lbs	6.97s 7.67 to 8.87 (-1.9)	88.0 mph	-	78.0 mph	-
2	Bob Smith OF 2022 195 lbs	7.16s 6.95 to 7.16 (-0.2)	-	-	81.0 mph	-
3	Will Miller OF 2023 210 lbs	7.17s 7.24 to 7.27 (-0.03)	74.0 mph	71.0 mph	-	-
4	Jim Peterson OF 2024	7.19s 7.17 to 7.25 (-0.08)	-	-	69.0 mph	-

SCORE CARD | STRENGTH REPORT | PERFORMANCE REPORT | METRIC REPORT | HITCHING REPORT

Metric	Value	Trend
Best Recent Performance	884	-
Last Performance	865	-
Improvement	2.20%	▲
Team Avg	847	-
Team Rank	3	-
Progress	1	-

PERFORMANCE TRENDS

Category	Value	Trend
40 YARD DASH	6.97s	-
OUTFIELD VELOCITY	88.0 mph	-
INFIELD VELOCITY	78.0 mph	-
CATCHER VELOCITY	81.0 mph	-
CATCHER POP TIME (S)	78.0 s	-

PLAYER DEVELOPMENT REPORTS

- TRACK YOUR DATA TO SEE AREAS THAT YOUR IMPROVING/DECREASING, AND HOW YOU COMPARE TO YOUR COMPETITION.

ROSTERS

- HAVE YOUR DATA AND HIGHLIGHTS VIEWABLE PRE, DURING, AND POST EVENT TO COLLEGE COACHES ALL ACROSS THE COUNTRY, THROUGH SOCIAL MEDIA, & MORE.

SHOWBALL DASHBOARD

SPORTS | **TEAMS** | **POSITIONS**

TEAM 1

Player	Position	Rank
Ben Jones	Catcher	# 4 OF
Will Miller	First Base	# 10 OF
Ben Jones	Outfield	# 11 1B
Bob Smith	Pitcher	# 15 1B
Bill Smith	Second Base	# 14 OF

TEAM 2

FIND THE RIGHT FIT FOR YOU

RESEARCHING SCHOOLS LAYS THE FOUNDATION FOR YOUR RECRUITING PROCESS AND BUILDING YOUR TARGET LIST. FIND YOUR DREAM SCHOOL AND SEND YOUR VERIFIED INFORMATION WITH A FEW CLICKS OF A BUTTON.

COLLEGE DIRECTORY

- FROM D1 TO JUCO, SEC TO HBCU, EVERY COLLEGE COACH IN THE US IS IN THE VC COLLEGE DIRECTORY.
- FIND SCHOOLS THAT FIT YOUR ATHLETIC AND ACADEMIC GOALS.
- FILTER SCHOOLS BY STATE, REGION, AND DIVISION.

COLLEGE DIRECTORY

Search College Directory Clear All Filters

School	Division	State	Athletic Website	Staff Directory	Admission
University of Alabama	NCAA Division I	Alabama	Website	Staff	Admissions
Alabama A&M University	NCAA Division I	Alabama	Website	Staff	Admissions
Alabama State University	NCAA Division I	Alabama	Website	Staff	Admissions
University of Alabama at Birmingham	NCAA Division I	Alabama	Website	Staff	Admissions
Auburn University	NCAA Division I	Alabama	Website	Staff	Admissions
Jacksonville State University	NCAA Division I	Alabama	Website	Staff	Admissions
Samford University	NCAA Division I	Alabama	Website	Staff	Admissions
University of South Alabama	NCAA Division I	Alabama	Website	Staff	Admissions
Troy University	NCAA Division I	Alabama	Website	Staff	Admissions
University of Arizona	NCAA Division I	Arizona	Website	Staff	Admissions
Arizona State University	NCAA Division I	Arizona	Website	Staff	Admissions

Alabama Tuition & Cost

How much does it cost to attend?

In State Alabama Resident Sticker Price		Out of State Resident Sticker Price	
Fee	Cost	Fee	Cost
Tuition	\$10,780	Tuition	\$30,250
Books and Supplies	\$1,000	Books and Supplies	\$1,000
Other Fees	\$840	Other Fees	\$840
Room and Board	\$12,810	Room and Board	\$12,810
Other Expenses Budget	\$4,620	Other Expenses Budget	\$4,620

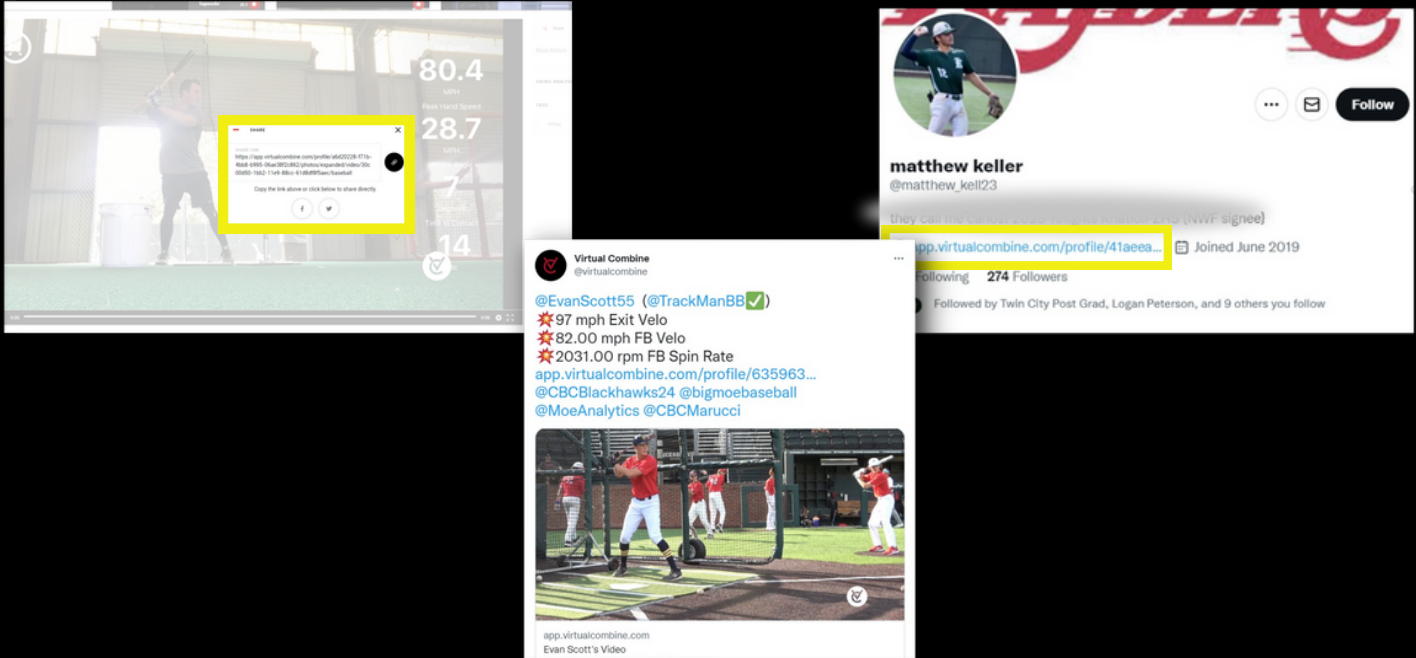
Residents of Alabama pay an annual total price of \$31,050 to attend The University of Alabama on a full-time basis. This fee is comprised of \$10,780 for tuition, \$12,810 room and board, \$1,000 for books and supplies and \$840 for other

COLLEGE OVERVIEWS

- DIVE DEEP INTO COLLEGE ATHLETIC WEBSITES TO CONFIRM FIT.
- FIND COST AND ADMISSION REQUIREMENTS FOR EVERY COLLEGE IN THE US.

SOCIAL MEDIA INTEGRATION

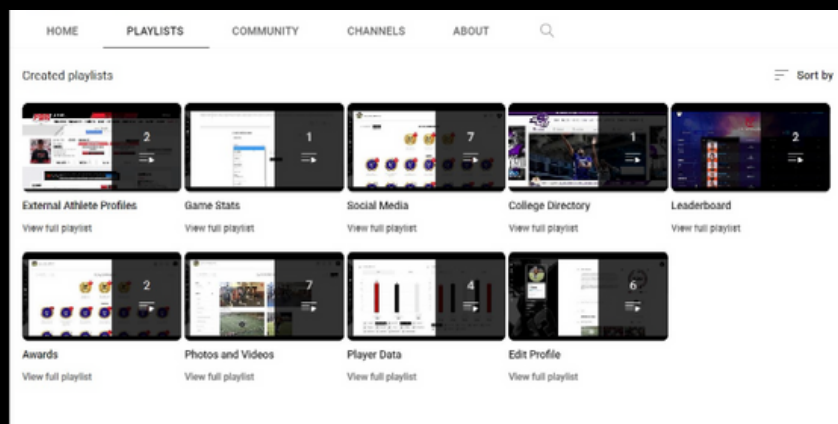
SHARE YOUR VIDEO HIGHLIGHTS, VERIFIED COMBINE DATA, AND PLAYER PROFILE DIRECTLY TO SOCIAL MEDIA WITH ONE CLICK OF A BUTTON.



TRAINING ON HOW TO #BUILDYOURBRAND

TRAINING VIDEOS

- INSTRUCTION VIDEOS THAT WALK YOU THROUGH STEP BY STEP ON HOW TO MAXIMIZE YOUR SHOWBALL PROFILE.



PRICE COMPARISON

SAVE A TREMENDOUS AMOUNT OF TIME AND MONEY BY USING YOUR SHOWBALL PLAYER PROFILE.

	SHOWBALL MEMBERSHIP	RECRUITING SERVICE
PRICE	\$9.99/MONTH	\$175/MONTH
VERIFIED METRICS	YES	NO
COLLEGE DIRECTORY	YES	YES
VIDEO UPLOADS	UNLIMITED	LIMITED
PLAYER DEVELOPMENT REPORTS	YES	NO
LINK TREE	YES	NO
NATIONAL SEARCH	YES	NO
OPEN SEARCH FOR COLLEGE COACHES	YES	YES

TRUST THE PROCESS AND GET STARTED TODAY!!

SHOWBALLBASEBALL@VIRTUALCOMBINE.COM



[@SHOWBALLCAMPS](https://twitter.com/SHOWBALLCAMPS)

[SAMPLE PLAYER PROFILE](#)



[SHOWBALLCAMPS](https://www.instagram.com/SHOWBALLCAMPS)

[SHOWBALL NATIONAL LEADERBOARD](#)